

HI NEIGHBORS! This Bulletin is the first of what we hope will be many "home grown" community service projects. We plan to publish as often as the Bulletin is needed when there is news to exchange or important information to communicate.

REFERENDUM SET FOR AUGUST 22ND

County Judge William L. Guild has set Saturday, August 22nd, as the day for the referendum - when we will be able to state that we want Woodridge Homes to be incorporated as the Village of Woodridge.

Virtually everyone signed the petition. The committee missed only three families - one (the Richard Van Sickles at 3007 - 75th Place), was busy at the hospital adding a nine pound boy to our population, the other two were out of town.

The polling will take place at temporary Schoolhouse No.1 (see map on page 2), 7600 Woodridge Parkway, from 6:00 a.m. to 6:00 p.m. County Judge Guild has designated the following as Judges of the Election: Elmer G. Messer, 2911 Westridge Drive, William T. Roberts, 3010 Forest Glen Parkway, and Leon Werch, 3006 Forest Glen Parkway. To be eligible to vote you must, of course, be twenty-one or over and a citizen of the United States. In addition, there are the residence requirements; you must have lived for one year in Illinois, of which 90 days were in DuPage County.

At least 30 days in the County must have been within the Election District, which is the same as the proposed boundaries of the Village. If you moved in on or before July 22nd and met the State and County residence requirements, you are eligible to vote in the Referendum.

Why a Village

All of the reasons, pro and con, for incorporation as a village were discussed at length in each of the homes when the petition for the referendum was circulated. Although all agreed that the arguments for incorporation were most strong, it may be well to restate them.

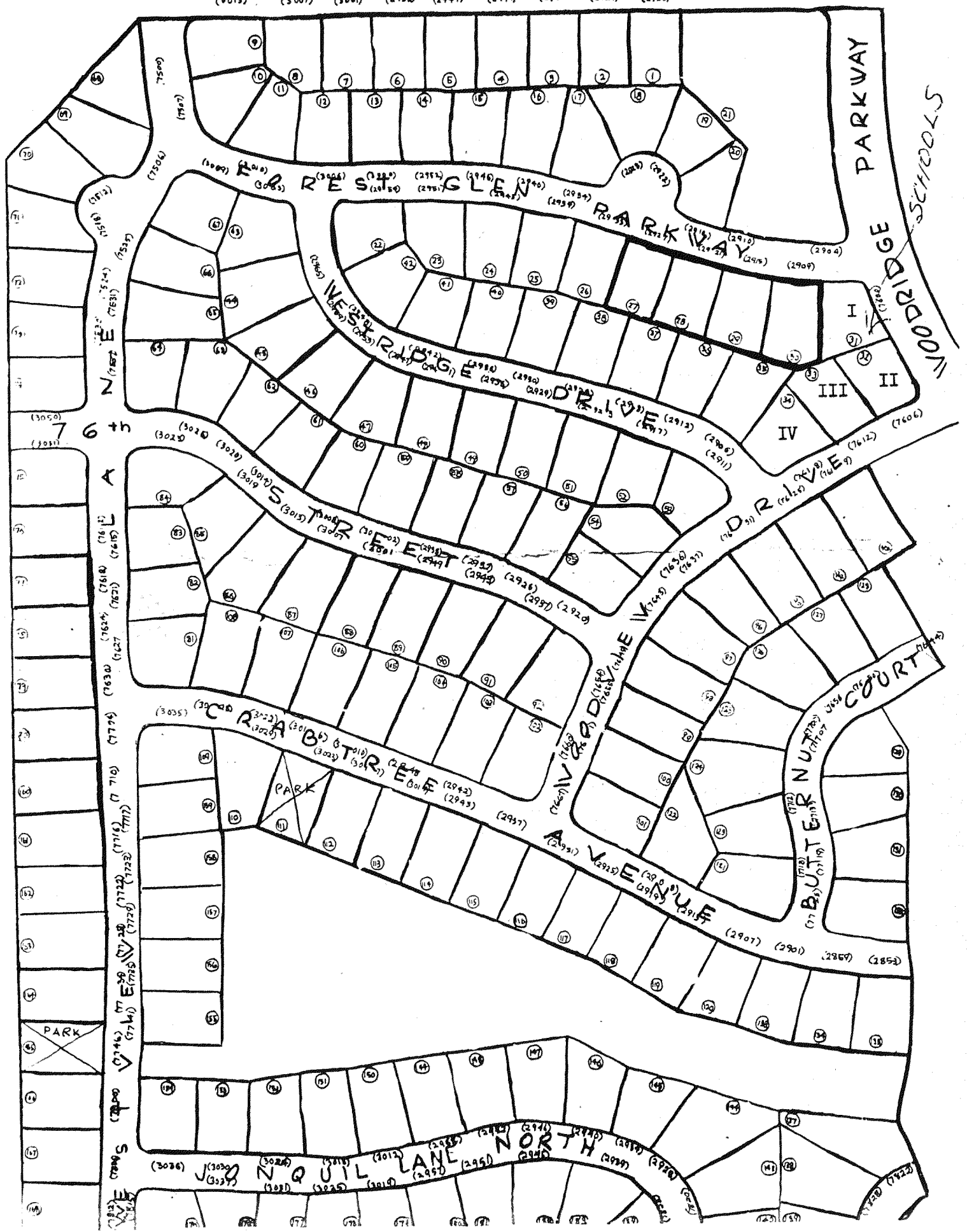
There are many problems that we should and must be working on immediately that we can only attempt to solve as an organized group. These are inevitable and inescapable problems that arise out of so many families living close together in a community such as ours. They are problems that can be met and solved only as a community. Some might be solved by a simple organization such as a Home Owners Association. In fact, this project started with the suggestion that such an association be

formed.

As an incorporated village, we will have our organized group, but with legal rights and powers that would make our program much more effective. For example, we are in need of police protection. There have been some incidences; fortunately, none serious, but enough to prove that the area should be patrolled. At present, we are dependent on the County Sheriff for such protection. At the request of the developer, Elmer Messer has been appointed a special deputy for this area.

Messer is trained, capable and most conscientious. He was formerly a deputy sheriff and is now on the security staff of International Harvester's research

(3015) (3007) (3001) (2958) (2947) (2941) (2938) (2929) (2915)



plant in Hinsdale. He has attended two of the FBI's special training institutes. Messer has been patrolling every night for at least a couple of hours for the last two weeks. Several of the men (Wally Larson, Paul Durma, Charles Ashcraft) have volunteered and have been helping him. If you should need Messer's help, you can call him on Woodland 8-4256.

But Messer's authority is strictly limited. A Village would give him and his volunteers the authority they need and should have. Our Village Board would have the power to pass and enforce the ordinances we need to protect our health and safety. It would, for example, establish speed limits (75th Street certainly needs them), regulate the use of our streets, define and prohibit nuisances. The establishment of a regular police department (even though manned by volunteers) and the patrolling of the area by an appropriately marked patrol-car would go a long way towards preventing any undesirable incidences. It would give all of us the security we would like to have and would help maintain the peace and quiet of our rural location.

Fire Protection

Adequate fireprotection is an immediate must. The Lisle Volunteer Fire District is reported to be a good one. Its equipment and manpower, however, are hardly enough to serve all of our additional homes. Most of all, we need the equipment and manpower right here in our own community. Through the Village, we can organize and equip our own fire protection quickly and efficiently. Again, fortunately, we already have neighbors with the necessary know-how and experience. For example, Wally Larson helped organize two other volunteer fire groups in areas in which he lived previously. Others have indicated they have served as volunteer firemen or are interested in joining the group.

Zoning Controls

Woodridge will soon be a large, built up community. Ours is now a well-planned

community. We want to keep it that way and plan for its future development. Our growth must be sound and channeled in the direction which will protect and promote our property values. Our Village would have the power to enact and enforce a zoning ordinance. We will be able to keep undesirable activities away from our homes and prevent the erection of sub-standard structures that might blight our community or create fire hazards. The Village may draft a plan for platting and subdividing the area for $1\frac{1}{2}$ miles beyond our borders, thus restricting any undesirable development on our outskirts. In this way, we can enhance our property values and maintain our well-planned community.

Community Services

There are a number of other group or community activities and services that our organization as a Village can promote. The developer is setting aside an area for a park between Crabtree Avenue and Jonquil Lane North. This should be equipped with recreational facilities and as soon as possible we should have a supervised, planned recreation and play program particularly for our young people. A Community or Civic Center for organizations and other group activities could be another of our obtainable projects.

The Cost?

The kind of Village we want will of course require financing. It need not, however, be expensive. We should be able to count heavily on volunteers. A number already have indicated they want to do their part. As they pointed out, this is our village, organized by all of us neighbors here in Woodridge for our mutual benefit.

Fortunately, we have several sources of revenue without the need of assessing ourselves any additional taxes. There are many dollars now being paid to the County and State which will be available for Village purposes. One very important item is building permit fees. At present, these fees are paid to DuPage County and the

money is used for County purposes generally, and not for the direct benefit of the Woodridge area. The developer is planning the construction of 300 homes per year for the next several years. For each building permit, a fee is charged, which has been estimated to be between \$30. and \$35. per house. At this rate, the building permits produce a revenue of some \$10,000. per year. These permits will be issued by the Village after it is incorporated, and the fees would be more than enough to get the Village organized and pay its operating expenses during its early years.

In addition, cities and villages are allocated 32 per cent of the State gas tax receipts. Allocation is based on population, each municipality being credited with about \$4.75 per capita per year. These funds can be used for the maintenance and construction of arterial streets and for the traffic signals, sewers, subways and street lighting on such main traffic thoroughfares in the community. Each automobile owner pays a five cents a gallon State gasoline tax, but only as a Village can we share fully in the benefits of this tax.

When commercial or business activities begin to locate in Woodridge, the license fees which would otherwise go to the County will go to the Village. These include such items as liquor and food licenses. The Village not only will be able to control and establish standards for these enterprises, but we will get the financial benefit of these local activities, rather than the funds going elsewhere.

With all of these funds available, it should not be necessary to assess ourselves any additional taxes. The major portion of the tax on our homes goes to the elementary and high school districts. In addition, we pay taxes to the County, the fire protection districts, the sanitary and forest preserve districts, and to others. These we will continue to pay whether we have a Village or not. When and if it becomes necessary to assess ourselves a Village tax, law limits the rate to 26 cents per \$100.

evaluation. Even in areas where the Villages now use their full taxing powers, the village portions of the tax bills average only about 15 per cent.

Why Incorporation Now?

Some of the more recent occupants of homes may have wondered why we were moving ahead with the Village program. For their benefit, the following reasoning is repeated.

The reasons for incorporating as a Village are just as strong and sound now as they would be later. We need our group activity, strength and power immediately. Delay means only time lost in planning for future development and the loss of dollars which could be used for local improvements.

All residents, both old and new, will be equally eligible for full participation and a voice in the Village affairs. Village Board meetings are always open, public meetings. The terms of the six trustees are staggered, so that there is frequent opportunity to choose new representatives if it is desired.

All of us, through the Village, can have a direct part immediately in planning and building for the future of our own community.

SCHOOL STARTS AUGUST 31

The four temporary school buildings are almost ready. They will be when school starts August 31. The teachers have been appointed and all the furnishings are ready to be installed, according to our School (Goodrich) Board President, Mr. Don Miller.

One of the buildings will house the first graders, one the second graders, one the third graders, and the fourth and fifth graders will share the fourth building. The older children—sixth, seventh and eighth grades—will attend at the main Goodrich building, Hobson Road and Rte. 53.

GET-ACQUAINTED PARTY PLANNED

An old fashioned "Ho Down" is tentatively planned for Saturday night, August 29. It will take place in the parking lot opposite the model houses at Forest Glen and Woodridge Parkways. Besides our having a good time, it will give all of us a chance to meet and get acquainted.

An informal arrangements committee is already at work. It consists of Bill and Arliss Adams (3009 Forest Glen Parkway), Dick and Eunice Lee (3013 75th), Leroy and Virginia Radtke (3007 75th), Bob and Lois Reid (2906 Westridge Drive), and James and Roslyn Stacey (2947 75th). They drew lots the other night and Bob Reid got stuck with the chairmanship. They will welcome additional members, help, ideas, etc. from anyone who is willing.

Radtke is with Canada Dry and Adams with Pepsi-Cola --and so, we will have access to liquid refreshment at minimum cost. The developer has generously offered to contribute to the cost and one of the beverage companies, at least, also may help. The only other expected expense would be for a professional square dance caller, if one can be obtained for that night.

The committee believes that the party can be financed by an admission charge of 25¢ per family (if all of us can come). They are planning to issue numbered tickets at the "gate" and draw for a door-prize (or prizes, if available). Some of the local merchants are being contacted for donations of the prizes. In addition, it has been suggested that each family bring something --pop corn, pretzels, nuts, potato chips, and the like-- for a "pot luck" table.

If you have other ideas, if you can help with any of the above, with any of the arrangements --decorations, organizing games for the children, etc.-- if you can and are willing to just help, please get in touch right away with one of the "committee."

Remember, make your plans to meet your neighbors SATURDAY NIGHT, AUGUST 29.

Contributions of
news for future
issues of the
Bulletin
will
be
welcomed by
your
editor

School Starts August 31
(continued)

Registration for all grades will be Friday morning, August 29, from 9:00 a.m. to Noon at the Goodrich School. Registration fee is \$6.50 per child. If you will need transportation to the school for registration, contact Loraine Larson, 3003 Forest Glen Pkwy., Arlyle Roberts, 3010 Forest Glen, or Pearl Werch, 3006 Forest Glen. Between them they'll get a ride for you.